




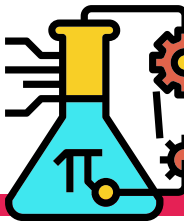
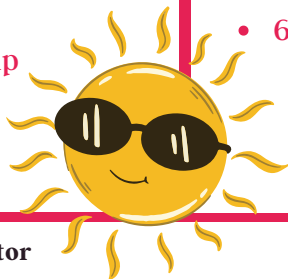


SPRING PROGRAMS	MONDAYS	TUESDAYS	WEDNESDAYS	THURSDAYS	FRIDAYS
<p>POWER HOUR HOMEWORK HELP Daily</p> 	<ul style="list-style-type: none"> • Triple Play 	<ul style="list-style-type: none"> • SMART Moves 	<ul style="list-style-type: none"> • Art 4 the Heart • Crochet Club 	<ul style="list-style-type: none"> • Lego Club 	<ul style="list-style-type: none"> • STEAM 
CALENDAR				MORE INFO	

- 3/31
 - March Madness Sports Wear!
- 4/3- 4/7
 - Spring Break, Club Open 9:00am - 5:00pm
- 4/17 - 6/2
 - Spring Programs- Sign up sheet required
- 4/21
 - Earth Day Party!
- 4/26
 - Tanaka Farms Field Trip
- 4/28
 - Crazy Dress Up Day!



- 5/5
 - Cinco De Mayo Fiesta
- 5/26
 - Last Day of School! Summer Vacation Dress Up!
- 5/29
 - **CLOSED** for Memorial Day
- 6/5 - 6/9
 - **CLOSED** for Summer Preparations
- 6/12
 - **FIRST DAY OF SUMMER CAMP!**



SUMMER CAMP REGISTRATION IS OPEN on April 4th !
Register on **MyClubHub**

SUMMER CAMP: 6/12 - 8/4 - Knott's, Beach Days, Wild Rivers, Theme Days, Basketball/Skate/Art Camps, Angel's Game, Club Olympics, & More!

Congratulations to the 2022 Youth of the Year **Jenna G.**



Monthly Fee: \$125

School Year Membership: \$100

**Financial aid is available for qualifying families*

Stephen Tinen, Area Director
stephent@bgclaguna.org
949-715-3056

Kamisha Johnson, Site Director
kamishaj@bgclaguna.org
949-358-9331

Aylin Espiritu & Nikki Wong, Member Services
ayline@bgclaguna.org & nikkiw@bgclaguna.org
949-494-2535